



## TECHNICAL DATA SHEET

## DESIGNER WALLPAPER



L'AN 29 I



L'AN 29 2



L'AN 29 3

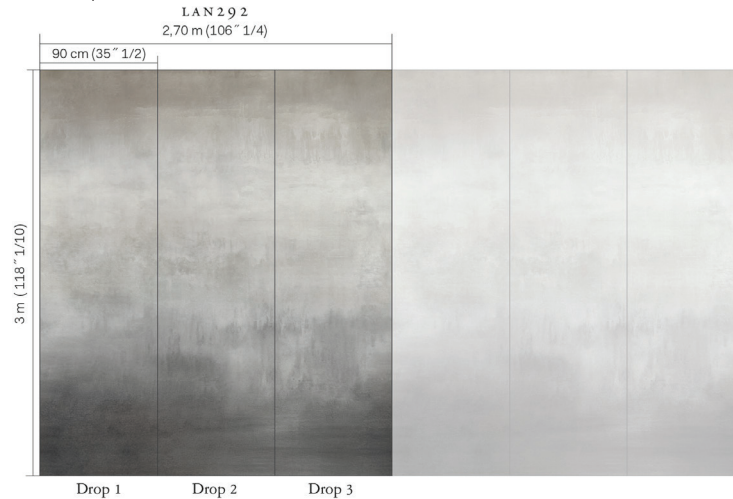
NB: The portrayed colours may differ from reality.

References L'AN 29 - EVENING GLOW

Composition: foil on non-woven

Weight:  $\pm 161 \text{ g/m}^2$  (4.75 oz/sq yd)

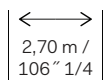
Custom colouring: 300 m / 330 yds min.



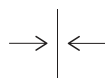
L'AN 29 I, L'AN 29 2 & L'AN 29 3: Panoramic design of 3 drops. Total dimension 2,70 x 3 m (106" 1/4 x 118" 1/10).

This panoramic has been created as a continuous design and can therefore be repeated endlessly.

Custom height/width as of 4 drops.



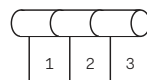
Width of the wallcovering.



The design needs a straight match.



Fire resistant:  
EU: B, s1-d0  
US: class A



Panoramic design  
of 3 drops.



Printed with  
solar energy.



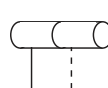
Light resistant:  
Xeno test 6.



Apply a ready mixed PVA or EVA clear adhesive directly to the wall, no need to humidify the back of the wallcovering.



Ecological.



Subtle  
seaming.