

THE SELECT
EXPLORE

—
BLOQ
creative
carpet tiles



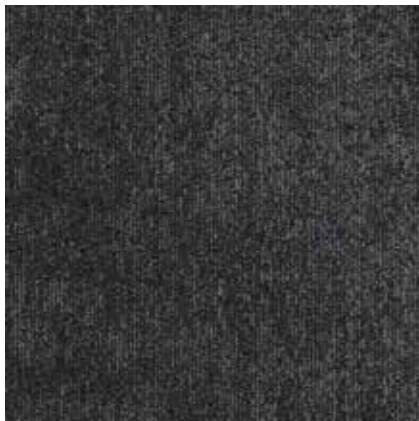
EXPLORE 924 METAL



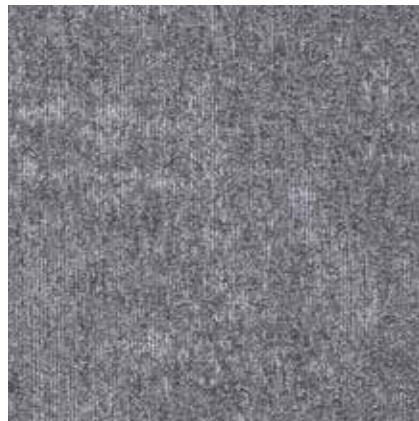
EXPLORE 923 BASALT



EXPLORE 523 NAVY



EXPLORE 929 ONYX



EXPLORE 922 SILVER



EXPLORE 126 SAND



EXPLORE 923 BASALT

BLOQ

creative
carpet tiles



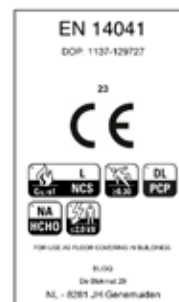
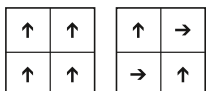
THE SELECT EXPLORE

SPECIFICATIONS

TYPE OF MANUFACTURE	Tufted Patterned Loop Pile 1/10"
	ISO 2424
PILE FIBER COMPOSITION	100% Polypropylene
	ISO 2424 Solution Dyed
SECONDARY BACKING	Bitback, Modified Bitumen
	ISO 2424 70% Recycled Content
DIMENSION	50 x 50 cm
	EN ISO 24342
PILE WEIGHT	550 g/m ²
	ISO 8543
SURFACE PILE WEIGHT	369 g/m ²
	ISO 8543
TOTAL WEIGHT	4 200 g/m ²
	ISO 8543
TOTAL THICKNESS	6.5 mm
	ISO 1765
PILE HEIGHT	3.4 mm
	ISO 1766
PILE DENSITY	0.109 g/m ³
	ISO 8543
NUMBER OF TUFTS	160 000 /m ²
	ISO 1763
DIMENSIONAL STABILITY	≤ 0.2%
	ISO 2551
NUMBER OF COLOURS	6
PACKAGING	Box: 20 tiles / 5 m ² Pallet: 200 m ²

PERFORMANCE

CLASSIFICATION	31
	EN 1307
LUXURY RATING	LC1
	EN 1307
CASTOR CHAIR RATING	B: Occasional use
	EN 985
FIRE CLASSIFICATION	C _{fl} -s1
	EN 13501-1
IMPACT SOUND INSULATION	ΔL _w : 24 dB
	EN ISO 10140-3
SOUND ABSORPTION	Frequency Hz 125 250 500 1000 2000 4000
	EN ISO 354 α _s 0.01 0.02 0.06 0.15 0.35 0.38
NOISE REDUCTION	α _w : 0.15
	EN ISO 354
PERMANENT ANTISTATIC	≤ 2 kV
	ISO 6356
THERMAL RESISTANCE	0.080 m ² K/W
	ISO 8302
COLOUR FASTNESS TO LIGHT	≥ 5-6
	EN ISO 105-B02
COLOUR FASTNESS TO WATER	≥ 4-5
	EN ISO 105-E01
RUBBING FASTNESS	≥ 4
	EN ISO 105-X12
GUT N° PRODIS	EEEEAFFEO



22/06/2023

All rights reserved to alter technical specifications.