

ANTARÈS

PRINTED CORK



XXL SQUARE

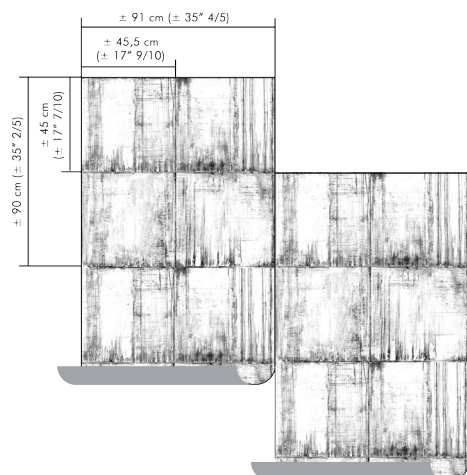


ANT101

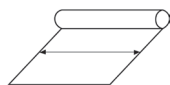
ANT107

ANT111

NB: The portrayed colours may differ from reality.



References ANT1..
Composition: cork
Weight: $\pm 269 \text{ g/m}^2$ ($\pm 7,85 \text{ oz/sq yd}$)



Width of the wallcovering:
 $\pm 91 \text{ cm}$ ($\pm 35 \frac{4}{5}$).



The pattern repeat
of the design is
 $\pm 90 \text{ cm} / \pm 35 \frac{2}{5}$
(max $\pm 45 \text{ cm} /$
 $\pm 17 \frac{7}{10}$) and
needs an offset
match.



Fire resistant:
US: class A.



Light resistant:
Xeno test 5-6.



Sold by cut
length.



Ecological.



Apply a ready mixed
PVA or EVA clear
adhesive directly to
the wall, no need to
humidify the back of
the wallcovering.

ANTARÈS

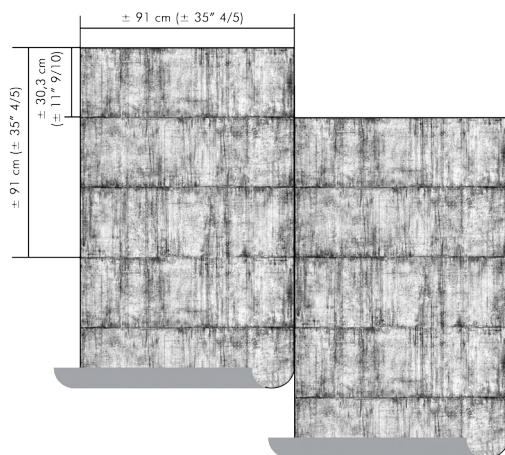
PRINTED CORK



MEDIUM SQUARE



NB: The portrayed colours may differ from reality.



References ANT2..
Composition: cork
Weight: $\pm 269 \text{ g/m}^2$ ($\pm 7,85 \text{ oz/sq yd}$)



Width of the wallcovering:
 $\pm 91 \text{ cm}$ ($\pm 35 \frac{4}{5}$).



The pattern repeat
of the design is
 $\pm 91 \text{ cm} / \pm 35 \frac{4}{5}$
(max $\pm 30,3 \text{ cm} /$
 $\pm 11 \frac{9}{10}$) and
needs an offset
match.



Fire resistant:
US: class A.



Light resistant:
Xeno test 5-6.



Sold by cut
length.



Ecological.



Apply a ready mixed
PVA or EVA clear
adhesive directly to
the wall, no need to
humidify the back of
the wallcovering.

ANTARÈS

PRINTED CORK



ANT303



ANT302

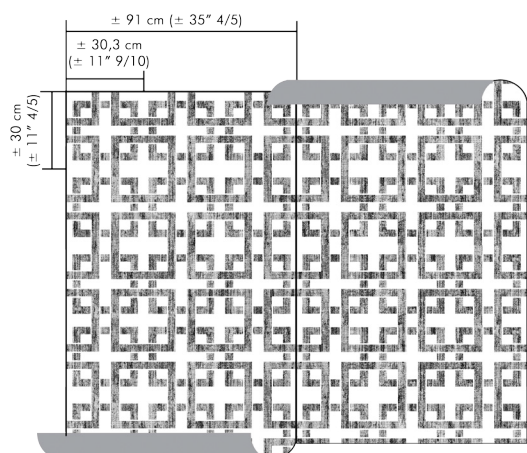


ANT310



ANT305

NB: The portrayed colours may differ from reality.



References ANT3..
Composition: cork
Weight: $\pm 269 \text{ g/m}^2$ ($\pm 7,85 \text{ oz/sq yd}$)



Width of the wallcovering:
 $\pm 91 \text{ cm}$ ($\pm 35'' 4/5$).



The pattern repeat of the design is $\pm 30 \text{ cm}$ / $\pm 11'' 4/5$ and needs a straight match.



Fire resistant:
US: class A.



Light resistant:
Xeno test 5-6.



Sold by cut length.



Ecological.



Apply a ready mixed PVA or EVA clear adhesive directly to the wall, no need to humidify the back of the wallcovering.



This design requires reverse hanging.

ANTARÈS

PRINTED CORK



ANT404



ANT408



ANT401

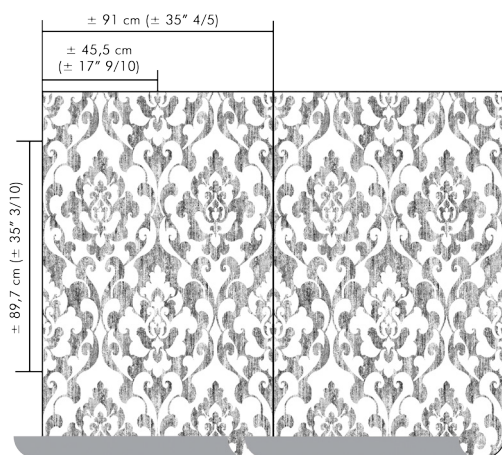


ANT411

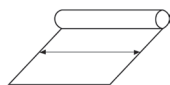


ANT409

NB: The portrayed colours may differ from reality.



References ANT4..
Composition: cork
Weight: $\pm 269 \text{ g/m}^2$ ($\pm 7,85 \text{ oz/sq yd}$)



Width of the wallcovering:
 $\pm 91 \text{ cm}$ ($\pm 35 \frac{4}{5}$).



The pattern repeat of the design is
 $\pm 89,7 \text{ cm}$ / $\pm 35 \frac{3}{10}$
and needs a straight match.



Fire resistant:
US: class A.



Light resistant:
Xeno test 5-6.



Sold by cut length.



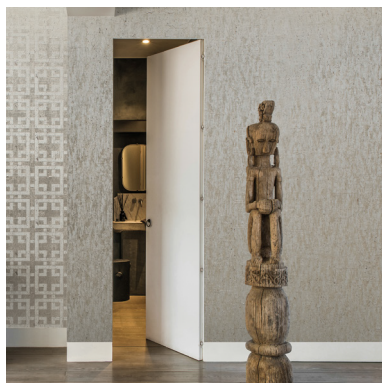
Ecological.



Apply a ready mixed PVA or EVA clear adhesive directly to the wall, no need to humidify the back of the wallcovering.

ANTARÈS

PRINTED CORK



NB: The portrayed colours may differ from reality.

References ANT5.
Composition: cork
Weight: $\pm 269 \text{ g/m}^2$ ($\pm 7,85 \text{ oz/sq yd}$)



Width of the wallcovering:
 $\pm 91 \text{ cm}$ ($\pm 35'' \frac{4}{5}$).



Pattern repeat is
0 cm (0'') and
the design does
not need to be
matched.



Fire resistant:
US: class A.



Light resistant:
Xeno test 5-6.



Sold by cut
length.



Ecological.



Apply a ready mixed
PVA or EVA clear
adhesive directly to
the wall, no need to
humidify the back of
the wallcovering.



This design
requires reverse
hanging.